



**ABBY**<sup>®</sup>

2016 .



1.	3
2.	3
2.1	3
2.2	3
2.3	4
2.4	4
2.5	6
2.6	6
3.	0
3.1	0
3.2	0
3.3	8
3.4	8
3.5.	9
3.6	12
3.7	12
3.8	13
3.9	13
3.10	13
3.11	13
4.	14
5.	20



1. .

25/10/2016 03/11/2016

c

: 10

2.

2.1

	25/10/2016 00:00	28/10/2016 04:00
	25/10/2016 00:00	28/10/2016 04:00
	25/10/2016 00:00	28/10/2016 04:00
	25/10/2016 00:00	31/10/2016 18:00
	25/10/2016 00:00	02/11/2016 18:00
	03/11/2016 08:00	03/11/2016 12:00

2.2

-			
		%	%
10	45	31.11	62.22

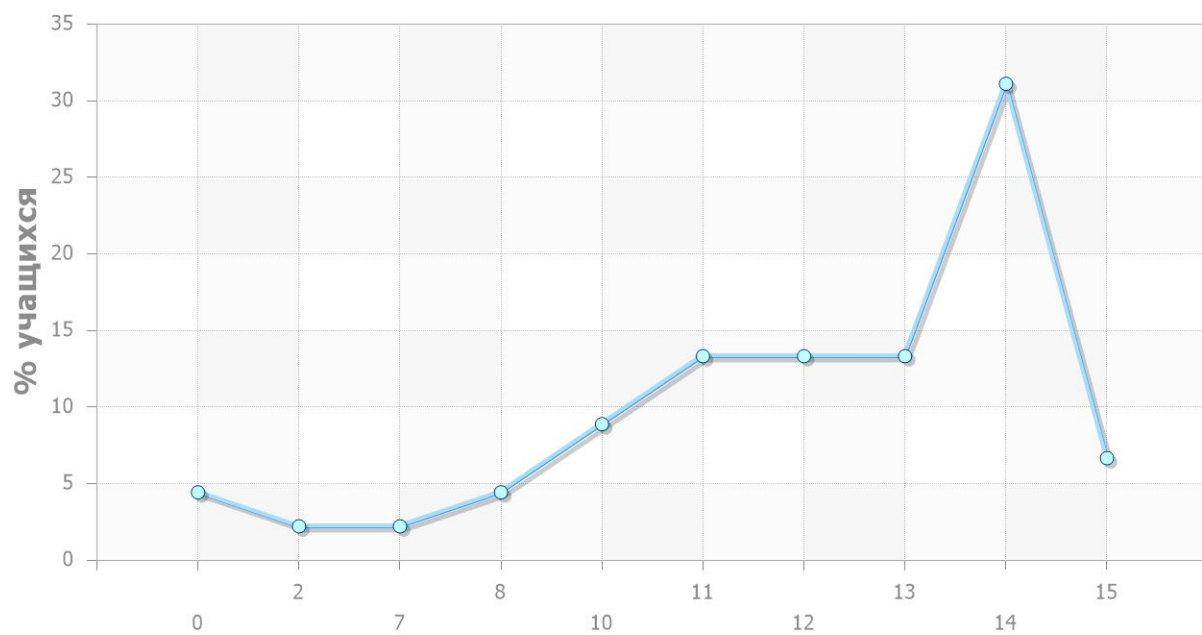


## 2.3

	-	-	%
	10	47	100%
	10	47	100%

## 2.4

	-	%
0	2	4.44%
2	1	2.22%
7	1	2.22%
8	2	4.44%
10	4	8.89%
11	6	13.33%
12	6	13.33%
13	6	13.33%
14	14	31.11%
15	3	6.67%





2.5

- 15

	,	, %
7	3	0.16%

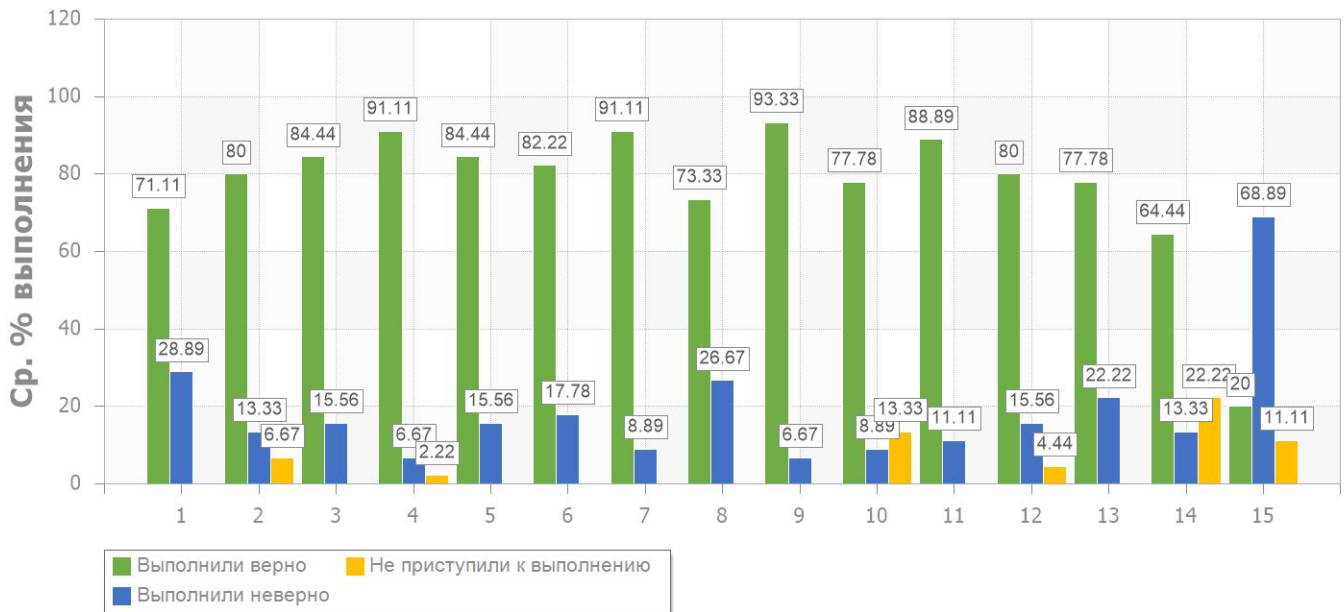
2.6

	,	, %
	3	6.67%

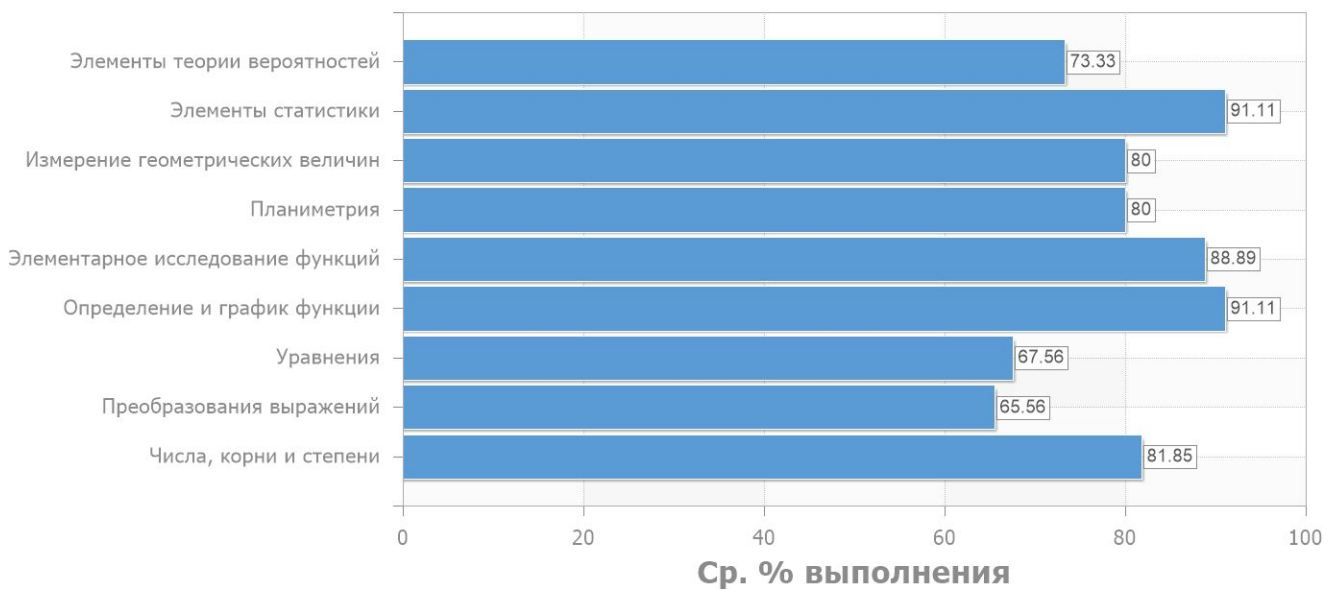


### 3.

#### 3.1

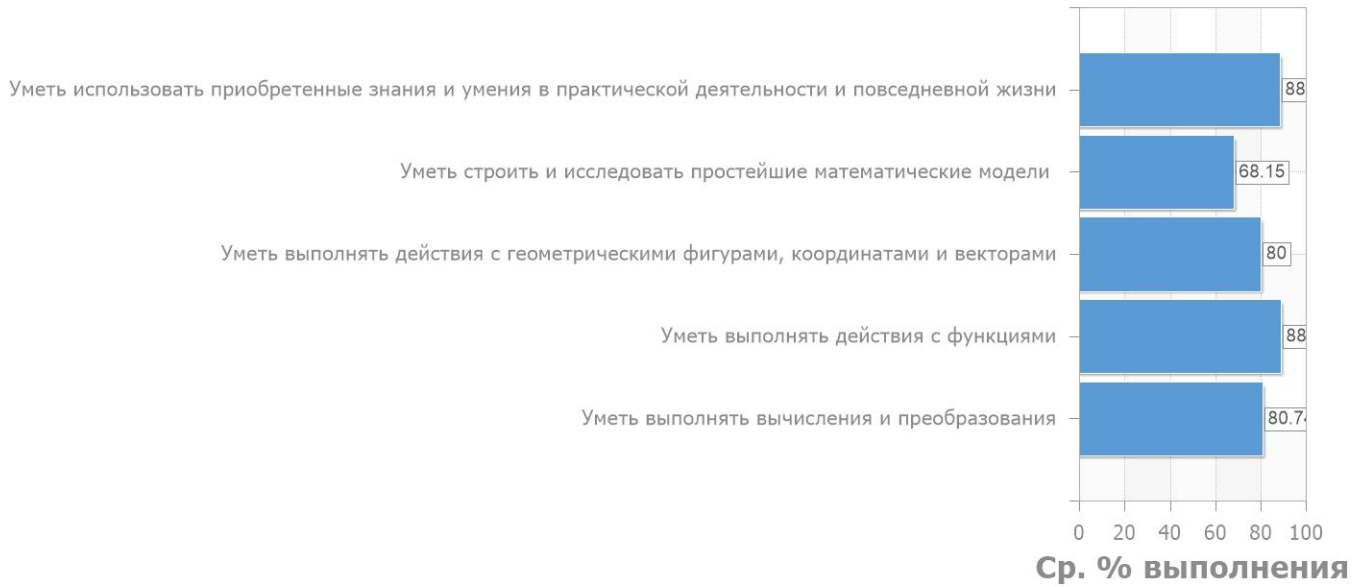


#### 3.2





### 3.3



### 3.4

	.%
	78.25
	64.44





### 3.5.

	( )	/ ( )	%
1	1.1.3 ; 1.4.1 ; 1.1.1	1.1	71
2	1.1.3 ; 1.4.1 ; 1.4.2 ; 1.1.4	1.1	74
2	1.1.3 ; 1.4.1 ; 1.4.2 ; 1.1.4	1.1	86
3	1.1.3	6.3	84
4	1.1.5 n > 1 ; 1.4.3	1.1	91
5	1.1.3 ; 2.1.12 ; 1.1.1	6.1	84
6	5.5.3 ; 5.1.1	5.2 ; 4.1 ( )	82



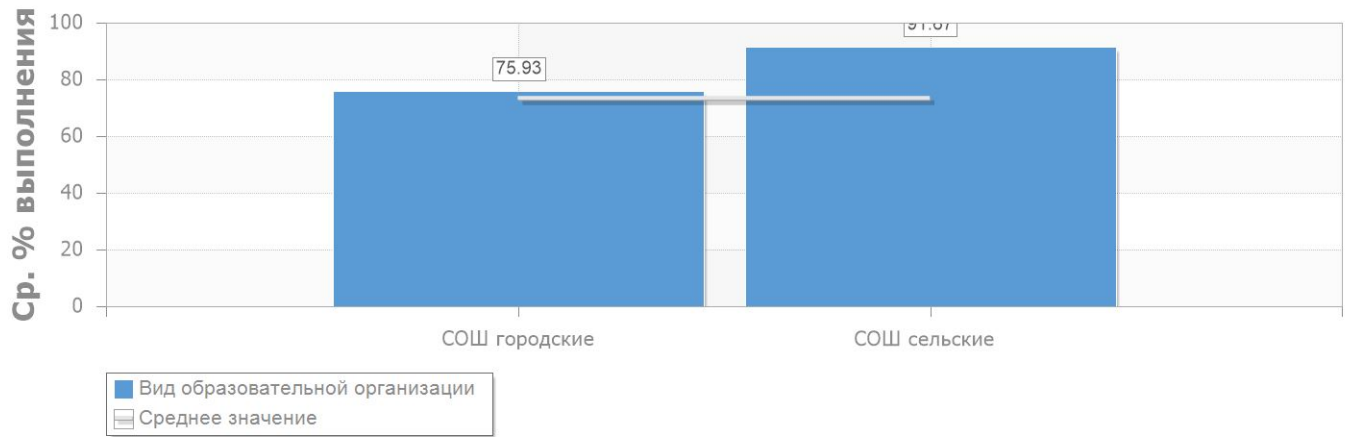
	( )	/ ( )	%
7	2.1.12 ; 6.2.1	6.1 ; 5.1	91
8	6.3.1	5.4	73
9	3.1.3 ; 6.2.1	6.2	93
10	5.5.3 5.1.4	4.1 ( , , )	78
11	3.1.3 ; 3.2.1 ; 3.2.6 ; 6.2.1	3.3 ; 6.2	89
12	5.5.1	4.1 ( , , )	80
13	2.1.12	5.3	78
14	2.1.12	5.1	64



	( )	/ ( )	%
15	1.4.1 ; 2.1.12	5.1	20

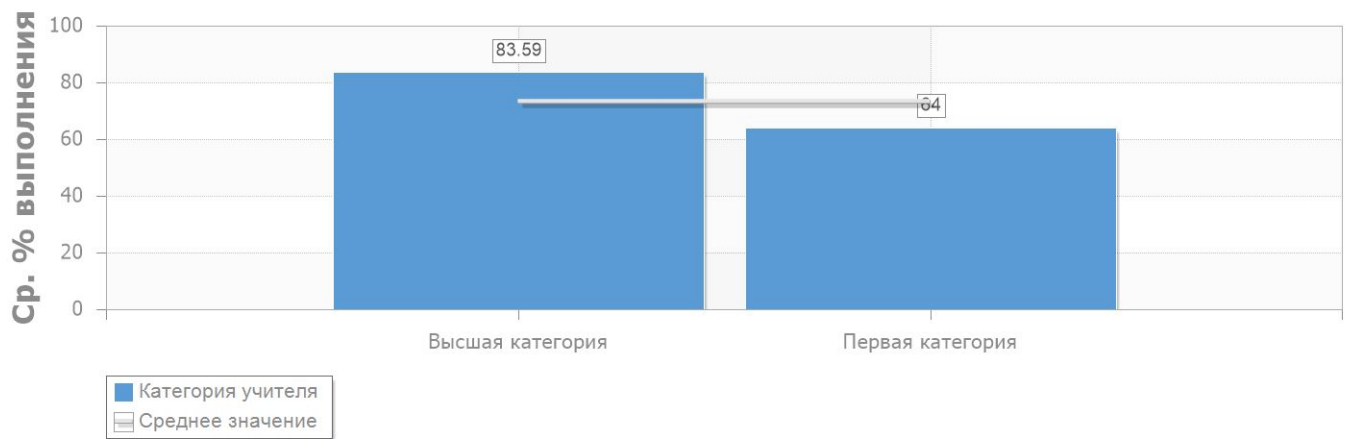


### 3.6



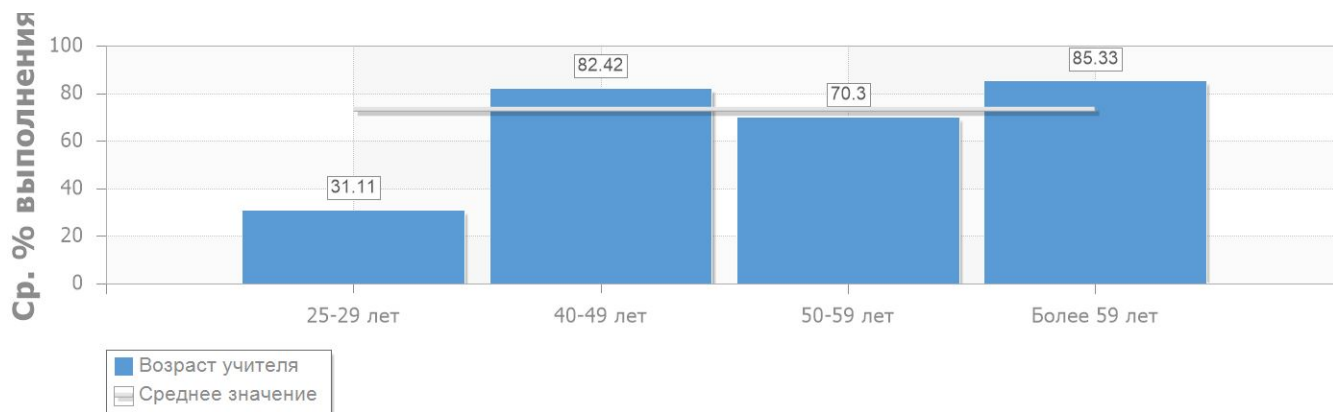
### 3.7

	.%	-	-
	83.59	1	13
	64.00	1	5

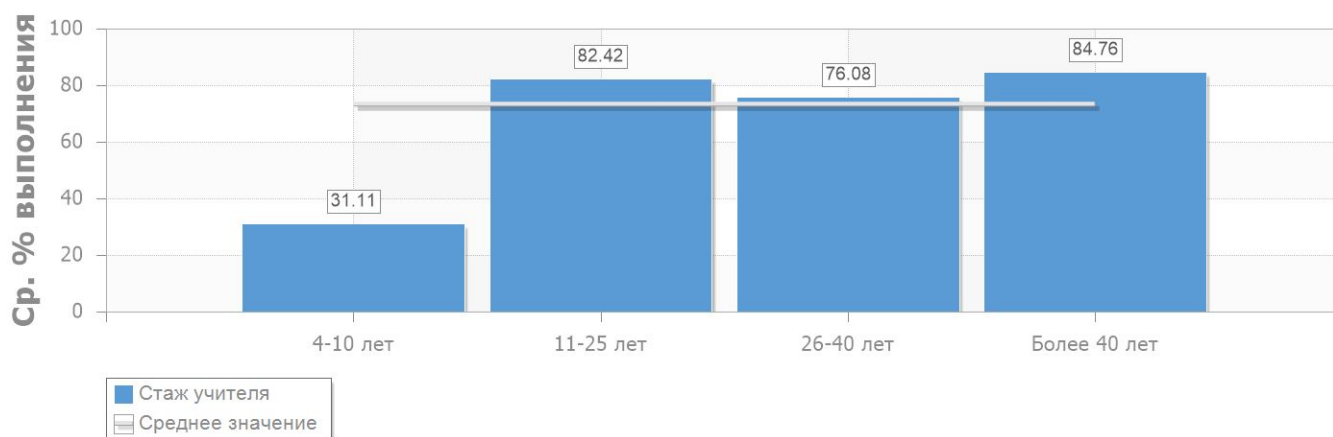




### 3.8



### 3.9



### 3.10

-	0 ( )	0 ( )
77.33%	10 ( )	45 ( )

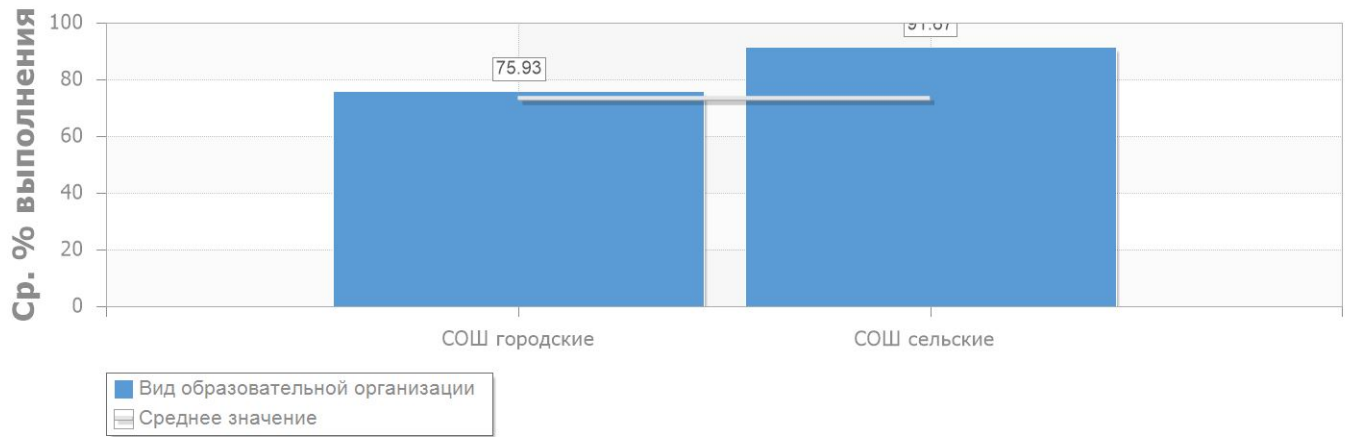
### 3.11

77.33%	10 ( )	45 ( )
--------	--------	--------



#### 4.

		-	-	%
	75.93	9	41	91.11%
	91.67	1	4	8.89%



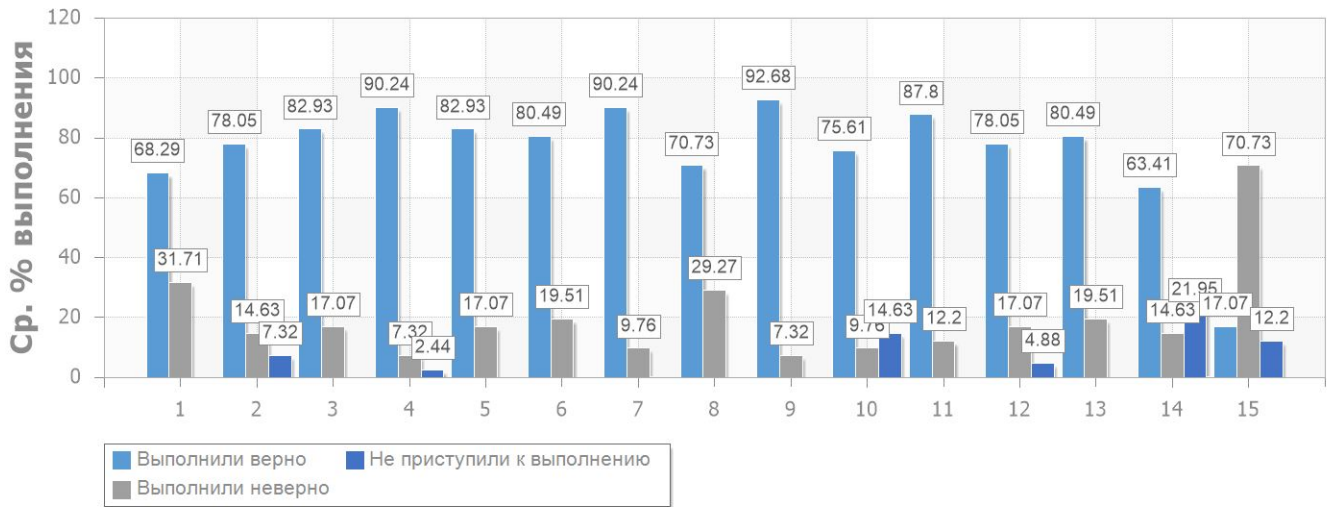


## 4.

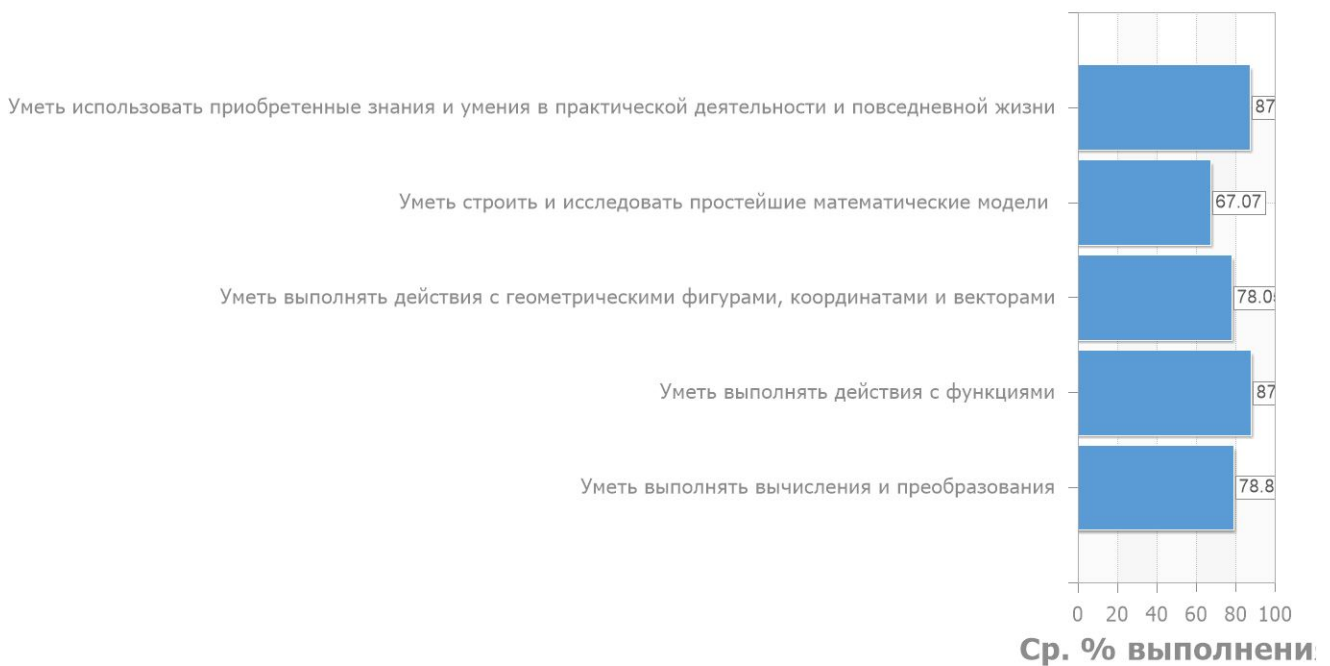
### 4.2

( )

#### 4.2.1



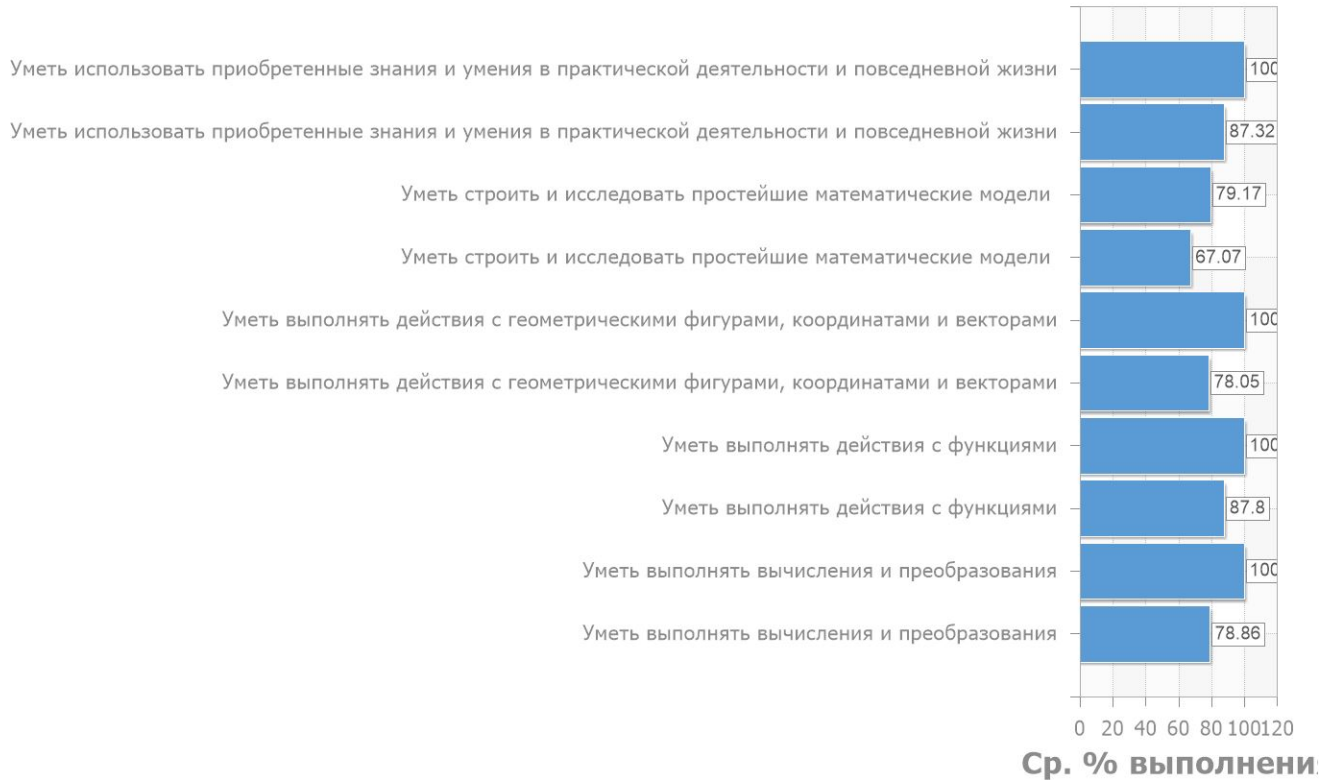
#### 4.2.2





## 4.

### 4.2.2



### 4.2.3

1	.	100.00%
2	1 .	93.33%
3	1 .	84.44%
4	5 .	83.59%
5	2 .	82.42%
6	.	76.67%
7	2 .	64.00%
8	.	31.11%
9	.	13.33%

### 4.2.3





4.

.

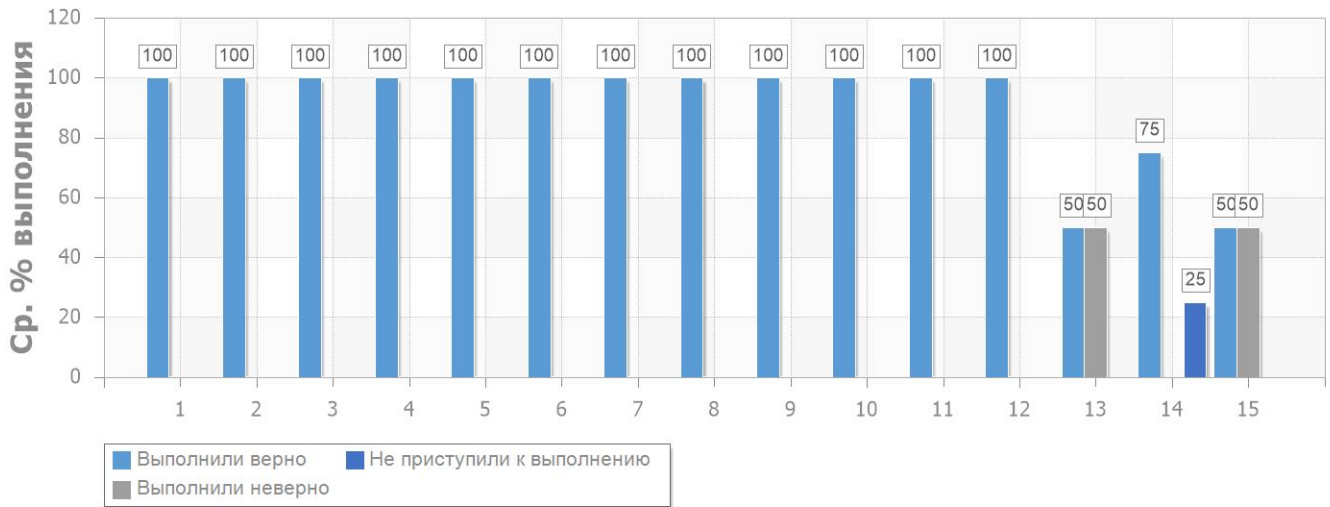
1	.	13.33%
2	.	31.11%
3	2 .	64.00%
4	.	76.67%
5	2 .	82.42%
6	5 .	83.59%
7	1 .	84.44%
8	1 .	93.33%
9	.	100.00%



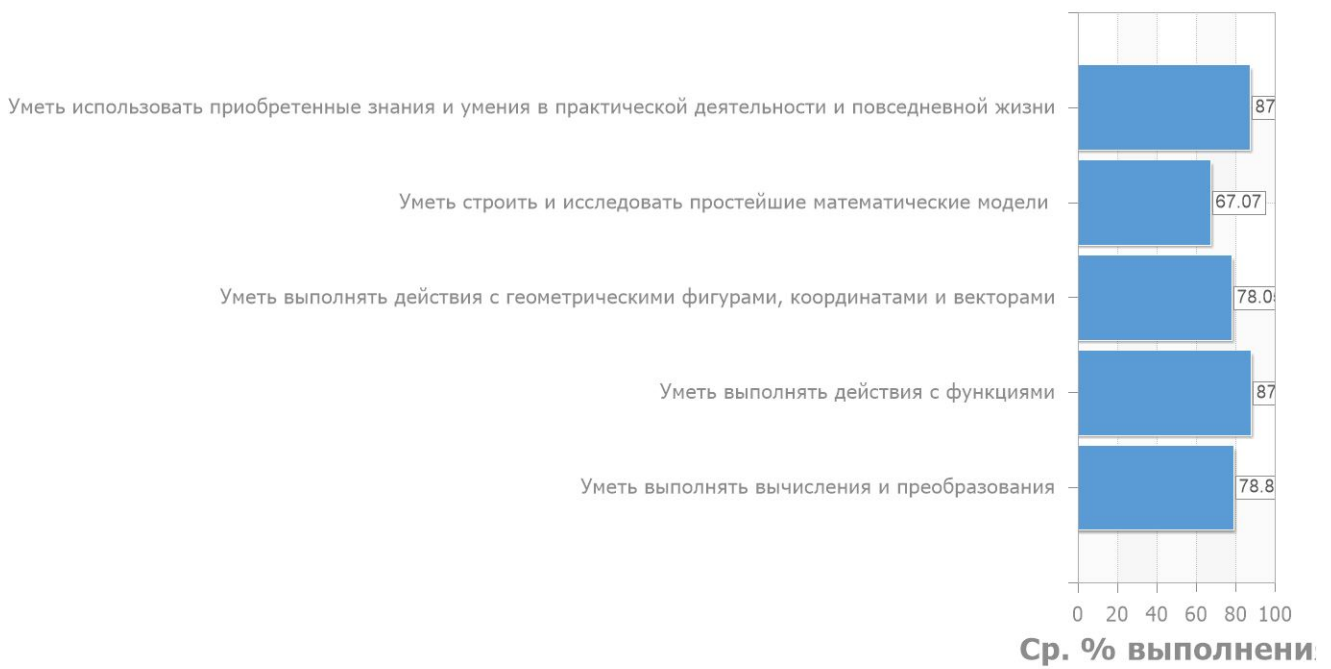
## 4.

### 4.3 ( )

#### 4.3.1



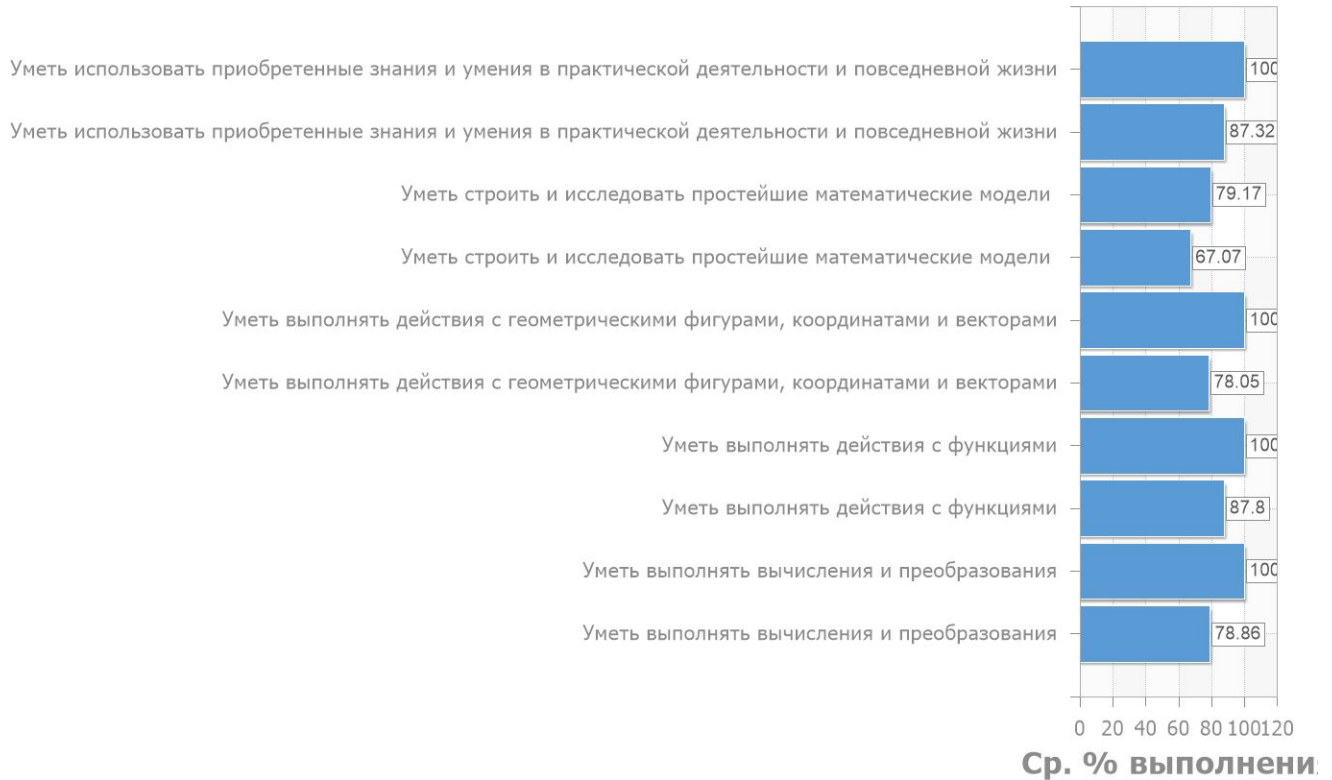
#### 4.3.2





## 4.

### 4.3.2



### 4.3.3

1		91.67%

### 4.3.3

1		91.67%



# 5

			%	
.	1	0	0.00	15.00
1 .	2	0	0.00	14.00
.	4	0	0.00	13.75
1 .	3	0	0.00	12.67
2 .	12	1	8.33	11.33
5 .	14	1	7.14	11.64
.	2	0	0.00	11.50
2 .	5	0	0.00	9.60
.	3	2	66.67	4.67
.	1	1	100.00	2.00